

**School of Engineering and Engineering Technology**  
**ENGINEERING TECHNOLOGY, B.S.**  
**MECHANICAL CONCENTRATION (MT)**

**2024-25**

SUGGESTED COURSE SEQUENCE

**First Semester - Fall**

**14 Hours**

___	BIBL	1033	3	Biblical Literature
___	ENGL	1013	3	English Composition I
___	ENGR	1311	1	Manufacturing Processes Lab
___	ENGR	1513	3	Intro to Engineering Practice I (Fall only)
___	LETU	1101	1	Cornerstones of Life and Learning
___	MATH	1303	3	Precalculus <sup>(1)</sup>

**Second Semester - Spring**

**16 Hours**

___	EETC	1021	1	DC Circuits Lab (Spring only) <sup>(1)</sup>
___	EETC	1022	2	DC Circuits (Spring only) <sup>(1)</sup>
___	ENGL	1023	3	English Composition II
___	ENGR	1523	3	Intro to Engineering Practice II (Spring only)
___	MATH	1253	3	Trigonometry <sup>(1)</sup>
___	PHYS	1111	1	General Physics I Lab (Spring only)
___	PHYS	1113	3	General Physics I (Spring only)

**Third Semester - Fall**

**18 Hours**

___	CHEM	1111	1	General Chemistry I Lab
___	CHEM	1113	3	General Chemistry I
___	EETC	1041	1	AC Circuits Lab (Fall only) <sup>(1)</sup>
___	EETC	1042	2	AC Circuits (Fall only) <sup>(1)</sup>
___	MATH	1604	4	Technical Calculus (Fall only) <sup>(1)</sup>
___	METC	2013	3	Statics (Fall only) <sup>(1)</sup>
___	PHYS	1121	1	General Physics II Lab (Fall only)
___	PHYS	1123	3	General Physics II (Fall only)

**Fourth Semester - Spring**

**16 Hours**

___	COSC	1303	3	Computer Science <sup>(2)</sup>
___	ENGR	2400	0	Sophomore Design Seminar (Spring only)
___	ENGR	2704	4	Project Mgmt, Design & Entrepreneurship
___	METC	2023	3	Dynamics (Spring only) <sup>(1)</sup>
___	THEO	2043	3	Biblical Theology for the Christian Life
___			3	Civic Engagement Elective

**Fifth Semester Fall**

**17 Hours**

___	DSTC	1413	3	Technical Design Elements (Fall only)
___	ENGR	2313	3	Materials Engineering
___	METC	3321	1	Strength of Materials Lab (Fall only)
___	METC	3323	3	Strength of Materials (Fall only)
___	METC	3503	3	Thermodynamics & Heat Transfer (Fall only)
___	MJET	2021	1	Materials Joining Fund Lab (Fall only)
___	MJET	2023	3	Materials Joining Fund (Fall only)

**Sixth Semester - Spring**

**17 Hours**

___	COMM	1113	3	Intro to Speech Communication
___	EETC	3433	3	Industrial Instrumentation & Controls (Spring only)
___	GETC	3323	3	Modern Manufacturing Methods (Spring only)
___	METC	4412	2	Kinematics of Machines (Spring only)
___	METC	4433	3	Elements of Machine Design (Spring only)
___			3	Technical Elective

**Seventh Semester - Fall**

**15 Hours**

___	BIBL		3	Biblical Engagment Elective
___	EETC	3413	3	Industrial Power and Machinery (Fall only)
___	ENGR	4813	3	Senior Design I (Fall only)
___	METC	4113	3	Engr Tech Measurements Lab (Fall only)
___			3	Civic Engagement Elective

**Eighth Semester - Spring**

**15 Hours**

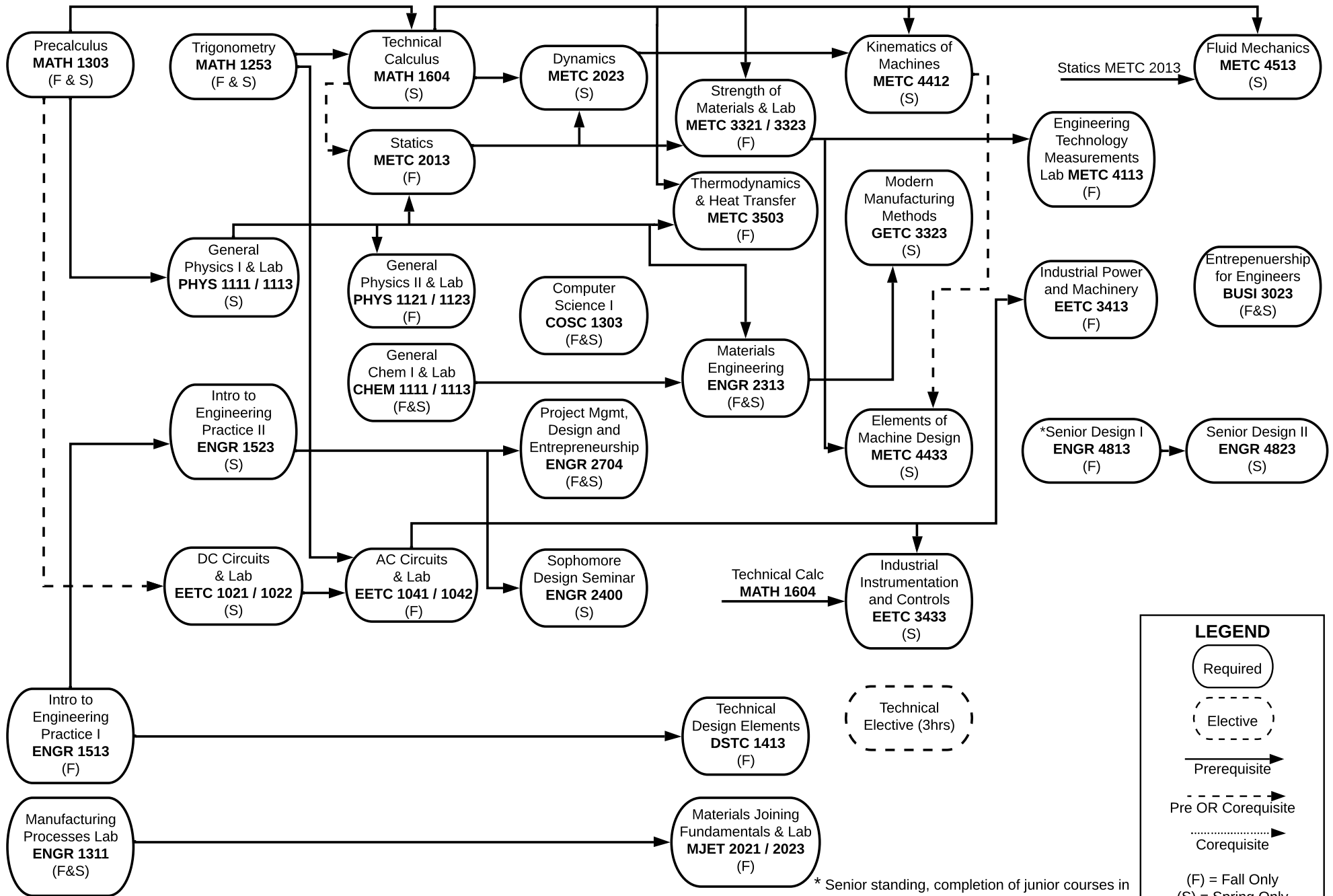
___	BUSI	3023	3	Entrepreneurship for Engineers
___	ENGR	4823	3	Senior Design II (Spring only)
___	METC	4513	3	Fluid Mechanics (Spring only)
___	THEO		3	Theological Engagement Elective
___			3	Humanities & Fine Arts Elective

**TOTAL HOURS 128**

1: Minimum grade of 'C' required.

2: MATH 1423 Elementary Statistics may be substituted for COSC 1303.

FRESHMAN		SOPHOMORE		JUNIOR		SENIOR	
Fall	Spring	Fall	Spring	Fall	Spring	Fall	Spring



**LEGEND**

- Required (solid line)
- Elective (dashed line)
- Prerequisite (solid arrow)
- Pre OR Corequisite (dashed arrow)
- Corequisite (dotted arrow)
- (F) = Fall Only
- (S) = Spring Only

\* Senior standing, completion of junior courses in concentration, and consent of instructor required.