

**School of Engineering and Engineering Technology**  
**ENGINEERING, B.S.**  
**MATERIALS JOINING CONCENTRATION (MJE)**

**2024-25**

**SUGGESTED COURSE SEQUENCE**

<b>First Semester - Fall</b>			
<b>17 Hours</b>			
_____	BIBL	1033	3 Biblical Literature
_____	ENGL	1013	3 English Composition I
_____	ENGR	1513	3 Intro to Engineering Practice I (Fall)
_____	LETU	1101	1 Cornerstones of Life & Learning
_____	MATH	1903	3 Calculus I <sup>(1)</sup>
_____	CHEM	1111	1 General Chemistry I Lab
_____	CHEM	1113	3 General Chemistry I

<b>Second Semester - Spring</b>			
<b>17</b>			
_____	COSC	1303	3 Computer Science 1
_____	ENGL	1023	3 English Composition II
_____	ENGR	1523	3 Intro to Engineering Practice II (Spring)
_____	ENGR	1311	1 Manufacturing Processes Lab
_____	MATH	2013	3 Calculus II <sup>(1)</sup>
_____	PHYS	2011	1 University Physics I Lab (Spring only)
_____	PHYS	2013	3 University Physics I (Spring only)

<b>Third Semester - Fall</b>			
<b>17</b>			
_____	ENGR	2313	3 Materials Engineering
_____	MATH	2303	3 Linear Algebra
_____	MEGR	2013	3 Statics <sup>(1)</sup>
_____	PHYS	2021	1 University Physics II Lab (Fall only)
_____	PHYS	2023	3 University Physics II (Fall only)
_____	MJET	2021	1 Mat Joining Fundamentals Lab (Fall)
_____	MJET	2023	3 Mat Joining Fundamentals (Fall only)

<b>Fourth Semester - Spring</b>			
<b>16</b>			
_____	THEO	2043	3 Biblical Theology for the Christian Life
_____	ENGR	2400	0 Sophomore Design Seminar (Spring)
_____	MEGR	3323	3 Mechanics of Materials (Spring only)
_____	MATH	2023	3 Calculus III
_____	MJEG	3103	3 Joining Methods 1 (Spring only) <sup>(1)</sup>
_____	EEGR	2051	1 Circuits & Measurements Lab <sup>(1)</sup>
_____	EEGR	2053	3 Electric Circuits <sup>(1)</sup>

<b>Fifth Semester - Fall</b>			
<b>16</b>			
_____	COMM	1113	3 Intro to Speech Communication
_____	MJEG	3213	3 Thermo Kinetics & Strctr of Mat'ls (Fall)
_____	MJEG	3201	1 Mat'ls Testing & Char Lab (Fall only)
_____	MJEG	4313	3 Nondestructive Evaluation (Fall only)
_____	MATH	2203	3 Differential Equations
_____	MEGR	2023	3 Dynamics <sup>(1)</sup>

<b>Sixth Semester - Spring</b>			
<b>16</b>			
_____	MJEG	3223	3 Welding Metallurgy 1 (Spring only) <sup>(1)</sup>
_____	MJEG	3013	3 Design Topics in Welding Eng (Spring)
_____	MATH	3403	3 Statistics
_____	BIBL		3 Biblical Engagement Elective
_____	ENGR	2704	4 Project Mgmt, Design & Entrep

<b>Seventh Semester - Fall</b>			
<b>15</b>			
_____	ENGR	4813	3 Senior Design I (Fall only)
_____	MJEG	4723	3 Heat Transfer for Welding (Fall only)
_____	MJEG	3XX3	3 Welding Engineering Elective
_____			3 Humanities & Fine Arts Elective
_____			3 Civic Engagement Elective

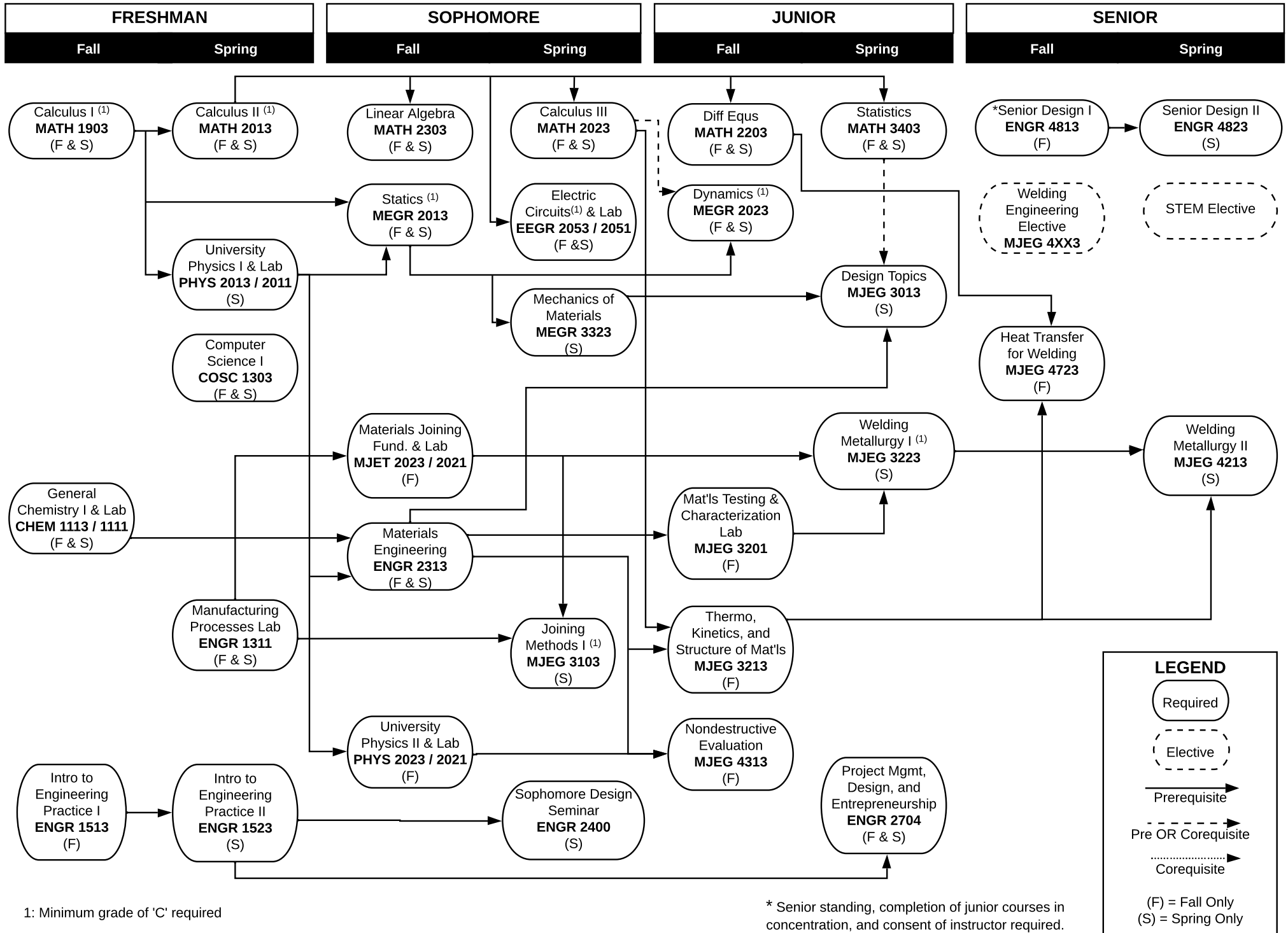
<b>Eighth Semester - Spring</b>			
<b>15</b>			
_____	ENGR	4823	3 Senior Design II (Spring only)
_____	MJEG	4213	3 Welding Metallurgy 2 (Spring only)
_____			3 STEM Elective
_____	THEO		3 Theological Engagement Elective
_____			3 Civic Engagement Elective

**TOTAL HOURS 129**

1: Minimum grade for 'C' required.

<b>Approved STEM Electives (Undergraduate)</b>			
A STEM elective includes all Technical Electives (below) plus additional 3000+ Math, Science, Business and 2000+ Computer Science.			
<b>Example approved 3000+ technical engineering electives</b>			
_____	CVGR	3313	3 Structural Analysis
_____	CVGR	3224	3 Design of Steel Structures
_____	MEGR	4443	3 Machine Design
_____	MEGR	4423	3 Vibrations
_____	EEGR	4913	3 ST: Electrical Power Systems
_____	ENGR	4951	3 ST: Junior Design I & 2
_____	ENGR	6223	3 Advanced Engineering Mathematics
_____	ENGR	6513	3 Design/Analysis of Engr Experiments

<b>Approved Welding Engineering Electives</b>			
_____	MJEG	4023	3 Welding Procedure Devel & QC (Fall,Even)
_____	MJEG	4353	3 Automation in Welding & Mfg (Fall, Odd)
<i>*The following 4000 level MJE courses available for parallel U/G Credit</i>			
_____	MJEG	5023	3 Welding Procedure Devel & QC (Fall,Even)
_____	MJEG	5213	3 Welding Metallurgy II (Spring only)
_____	MJEG	5313	3 Nondestructive Evaluation (Fall only)
_____	MJEG	5353	3 Automation in Welding & Mfg (Fall, Odd)



1: Minimum grade of 'C' required

\* Senior standing, completion of junior courses in concentration, and consent of instructor required.